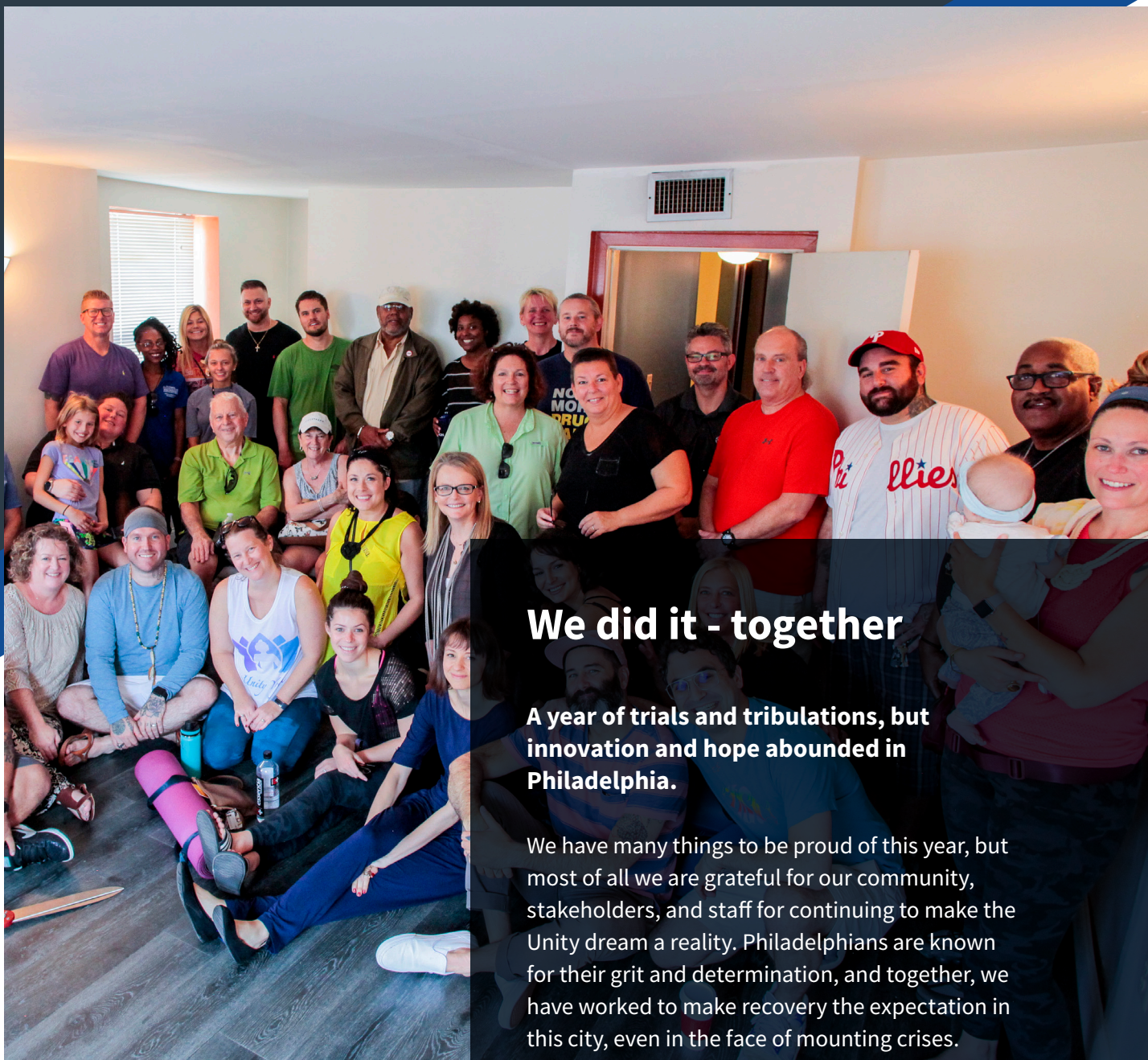


2020 Annual Report

**Recovery is the expectation,
not the exception.**

Unity Recovery is a recovery community organization (RCO) serving the Philadelphia community and beyond.



We did it - together

A year of trials and tribulations, but innovation and hope abounded in Philadelphia.

We have many things to be proud of this year, but most of all we are grateful for our community, stakeholders, and staff for continuing to make the Unity dream a reality. Philadelphians are known for their grit and determination, and together, we have worked to make recovery the expectation in this city, even in the face of mounting crises.

Even as we made the switch to fully digital in the early part of the year, we have come together to expand our staff, serve hundreds of Philadelphians, and bring authentic community-based recovery supports to everyone who wants them - all at no cost. We look forward to continuing this work in 2021 in partnership with each of you. Together, we will ensure that recovery remains the expectation, never the exception.

2020 Annual Report

Table of Contents

About Unity	04
Our Values	05
Executive Director's Statement	06
Organization History	07
Board of Directors	08
Our Team	10
Our Services and Activities	12
Recovery Support Overview	14
2020 Campaigns	16
Financial Report	18
2020 Service Outcomes	20
Community Partners	22

Investing in
recovery isn't
optional,
it's required.



Unity Recovery

4363 Main Street, Floor 3
Philadelphia, PA, 19127



267-748-2454



contact@unityrecovery.org
www.unityrecovery.org

About Unity

Unity Recovery is a recovery community organization (RCO) serving the Philadelphia community. We believe recovery is an individualized and dynamic process, and support those with mental health or substance use disorders, no matter the pathway they use.



Recovery is a reality for over 22 million Americans with substance use disorders, over 40 million in mental health recovery, and countless more millions across the globe. We truly believe that recovery is individual, dynamic, and ultimately, best directed by the individual with support from their community. With this philosophy in mind, Unity Recovery was founded to be an inclusive recovery community organization and drop-in center for everyone.

Philadelphia is home to one of the most vibrant and diverse recovery communities in the United States. At Unity, we partner with the entire community to bring comprehensive community-based recovery supports to those that need them – including recovery meetings, peer recovery support services, recovery-focused education, and vocational training.

Our Mission

To provide inclusive community-based recovery support services and education for all individuals in or seeking recovery.

- ➔ Recovery is a dynamic process in which the individual is the expert in their own lives
- ➔ All pathways, programs, and modalities of recovery are valuable and legitimate
- ➔ The ability to pay should not impact the availability of quality recovery support services

“I am so thankful for Unity and my peer specialist - the naloxone they provided me helped save a friends life. I don’t know where we would be without these supports!”

- Unity Participant

Our Values

At Unity, we are guided by a core set of principles and beliefs that inform everything we do. Whether it is how we engage with our community or how we provide one-on-one services, our core values drive us.

UNITY RECOVERY

RECOVERY COMMUNITY ORGANIZATION

COMMUNITY PRINCIPLES

- Recovery is a dynamic process in which the **individual** is the expert in their own lives
- All pathways, programs, and modalities of recovery are **valuable** and **legitimate**
- Individuals who use substances or live with mental illness are worthy, loved, and deserve **dignity**
- Saving lives is always #1; you can't recover if you are no longer living
- Harm reduction is both a pathway and program of recovery, as well as a life saving set of services

- The community is the **best** source of information in addressing substance use, mental health, and other quality of life concerns
- Stigma, bias, and discrimination have no place here**
- Tough love approaches to initiating recovery dehumanize and harm individuals living with substance use or mental health disorders
- The ability to pay should **never** impact the availability of quality recovery support services

Our vision

We envision a world where recovery is no longer hidden in the shadows and the millions of Americans with mental health and substance use disorders are celebrated and supported.



Executive Director's Statement

2020 has been a transformative year for our community and our organization - thanks to all of you.



Robert D. Ashford, PhD, MSW

Executive Director

A handwritten signature in black ink, appearing to be "R. Ashford".

Through a year of unknown, we emerged as a beacon of innovation and hope for the community.

Thanks to our community, our staff, our supporters, and our Board of Directors - we were able to continue serving even more individuals this year throughout the COVID-19 pandemic. As the pandemic has raged on, the Unity community has come together to ensure that recovery is always available, even digitally.

While this year has certainly looked different than we all expected, we are nothing if not resilient. We have said goodbye to loved ones, to community members, and to colleagues, but through it all we have remained connected even as we were physically distant. This past year has been difficult for all, but we have made it through stronger than ever before due to the tireless work of our staff and partners.

We are excited to continue growing and impacting our community in 2021, and with your help, we know that we will thrive beyond our wildest expectations once again.

”

We have said goodbye to loved ones, to community members, and to colleagues, but through it all we have remained connected even as we were physically distant

Organization History



Commitment to service, connection to community

“It feels great to be seen as a whole person each time I am at the center - I am not sure if that happens anywhere else I go where they know I am in recovery”

- Unity Participant

Our Journey



Board of Directors

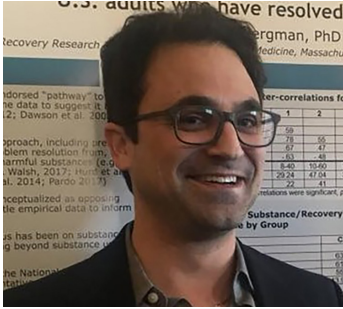
**Experienced, effective, and
diverse leadership**



”

**Unity is a national leader
in the recovery field,
and it is an honor to help
lead the way.**

**- Brent Canode, MPA
Board President**



Dr. Brandon Bergman
Board Member



Daniela Luzi Tudor
Board Secretary



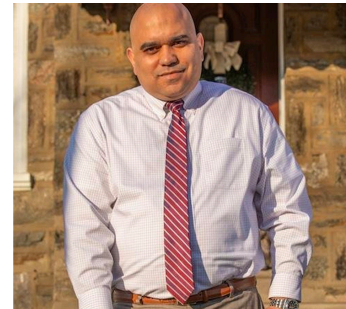
Melisa Simmons
Board Treasurer



Dr. Ricky Bluthenthal
Board Member



Dr. Jennifer Potter
Board Member



Evan Vargas
Board Member



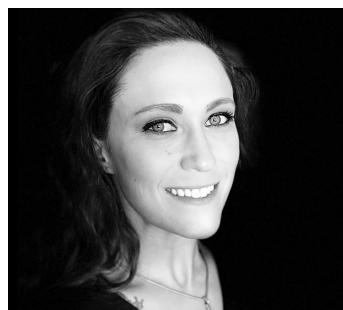
Melinda Johnston
Board Member



Lauryn Wicks
Board Member



Shelly Young
Board Member



Arielle Ashford
Board Member



Rebecca Bonner
Board Member

Our Team

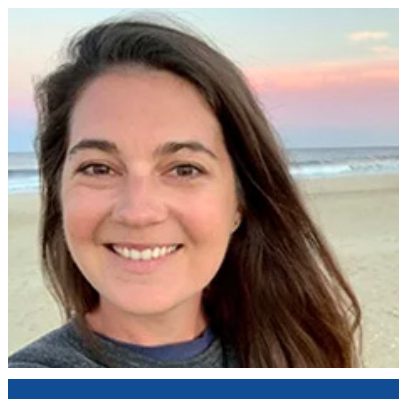
Peer-led.
Peer-driven.



Robert D. Ashford
Executive Director



Adam Sledd
Recovery Support Director



Kim Friel
Project Coordinator



Chris Golding
Project Director



Jewel
PRSS



Desiree
PRSS



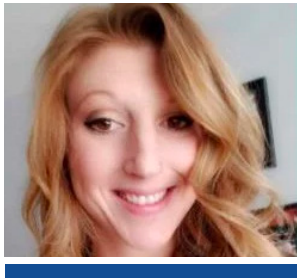
Donna
PRSS



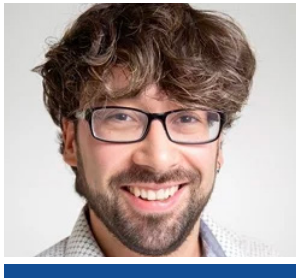
Greg
PRSS



Rasheetta
PRSS



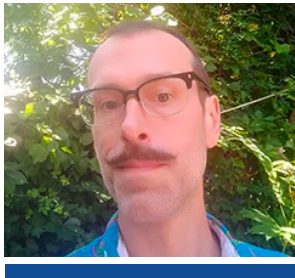
Chelsea
PRSS



Gio
PRSS



Annette
PRSS



John
PRSS



Lesley
PRSS

We offer a range of recovery support services in our center and in the community

Recovery Services





Peer Recovery Support

We take a recovery management and support approach to individual recovery support services. Participants partner with a peer to develop a recovery plan that fits their personal recovery goals with a focus on social determinants of recovery.



Mutual Aid Meetings

Supporting all pathways to recovery isn't just a slogan. We offer All Recovery, SMART, Recovery Dharma, AA/NA, MARS, Harm Reduction Support, and Grieve Out Loud recovery meetings every month. No matter the pathway, we support individual recovery.



Pro-social Events

Having fun in recovery is critical to living the life desired, and not everything we do is a direct support service. From bowling and movie nights to recovery kickball and softball leagues, participants can fill their day with great hobbies in no time.



Community Outreach and Education

Creating recovery ready communities is one of our primary goals. We outreach every day to help create supports across Philadelphia so that recovery is supported no matter where a participant lives and works.



Advocacy Activities

Building healthy communities starts with policy designed to support individuals in recovery. We train individuals in recovery to find their voice and advocate for recovery-informed policy in Pennsylvania.



Recovery Yoga

Physical health is just as important as mental health and we provide 4 weekly recovery yoga classes to anyone with an interest. These classes follow the TYP recovery yoga curriculum and are pathway agnostic.

Peer Recovery Support

Providing peer-based recovery support to individuals is our primary area of service.

Our peer staff partner with individuals to craft recovery plans that are focused on primary social determinant domains in an effort to increase recovery capital.



Initial Engagement

- 01.** Individuals can drop-in to the Unity Recovery center, be referred by one of our community partners, or outreach to us through the website or peer text line.

Build Rapport

- 02.** Each of our peer specialists works to build connection and trust with individuals who reach out. We start with shared experiences and move to recovery support engagement.

Establish Recovery Plan

- 03.** All of our one-on-one peer services rely on a comprehensive recovery plan to guide the process. Recovery plans are fully self-directed and only include items important to the recoveree.

Ongoing Engagement

- 04.** Whether it is for 6 weeks or 6 months, ongoing engagement is never time limited nor constrained by the ability to pay. Recoverees can engage as long as they wish.

RecoveryLink™

While mutual aid and clinical programs remain important recovery tools, research shows people need more—more options, more personalized support, and more connections—for health and happiness in recovery.

Unity's RecoveryLink™ is an holistic approach to wellness that concentrates on social determinants of recovery - things like housing, education, finances, health, life skills, and relationships.

At its core, Unity's RecoveryLink™ is about empowering you to identify and use your existing strengths to create a recovery plan that's right for you at this stage in your life. We partner with you to navigate a complex process so that you can focus on your recovery capital.

Dedicated Peers

Unity Recovery peer recovery support specialists are your dedicated support team that will be with you every step of the way.

Comprehensive Support

Peers will work with you to develop a recovery plan that makes sense for your strengths, goals, and priorities. We take a recovery capital approach to recovery planning and we know that you're the expert in your own life.

Flexible Engagement

From full recovery planning to regular text check-ins, you are in charge of how often you want to receive support from your peer.

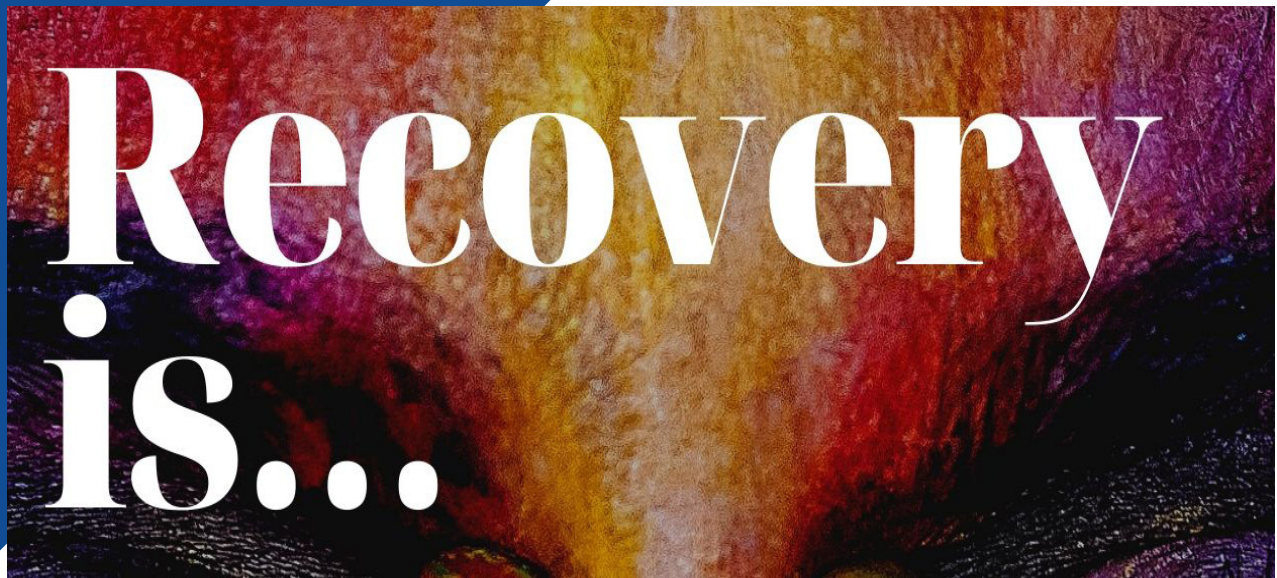
”

Unity was there for my brother when we had no where else to turn. Thank you!

- Unity Family Participant



Recent Campaigns



Recovery is... Campaign

Recovery is many things, and for 22 million Americans it is their daily reality. At its core, Recovery is...humanity. Join us in celebrating the recovery communities differences, similarities, and existence in our 2020 campaign. Together, we can let the world know that recovery is the expectation.

Launch Date: December 2019



Recovery Friendly Workplaces

Recovery Friendly Workplaces helps employers and organizations achieve recovery friendly status through training, technical assistance, and employee recovery support services.

For individuals in or seeking recovery, who are seeking gainful employment, we also offer employment readiness services and peer-based recovery support services to help in the process.

Launch Date: July 2020

Pregnant & Postpartum Recovery Supports

Unity's pregnancy and postpartum recovery support services and care coordination (PPR) project offers a dedicated pregnancy and postpartum support services option for those women with opioid use disorder or stimulant use disorder who are currently pregnant or recently postpartum (within the last year).

Launch Date: December 2020



2020 Financial Overview

We finished the year with committed and awarded funding to see us through 2021.

Thanks to successful grant applications and the generosity of our Board of Directors and community stakeholders, we are well positioned for future success.



Grant
Awards

\$718,000



Unrestricted
Gifts

\$38,138



Community
Donations

\$10,304



Financial Report

		2020	2021 Projection	2022 Projection
Revenue				
1.	Grants	\$619,300	\$750,000	\$900,000
2.	Unrestricted Gifts	\$38,138	\$50,000	\$60,000
3.	Community Donations	\$10,304	\$20,000	\$25,000
Total Revenue		\$667,742	\$820,000	\$985,000
Expenses				
7.	Advertising & Marketing	\$3,428	\$10,000	\$25,000
8.	Insurance	\$6,814	\$8,000	\$12,000
9.	Supplies & Equipment	\$7,691	\$10,000	\$15,000
10.	Legal & Professional Services	\$117,170	\$125,000	\$135,000
11.	Lease & Utilities	\$50,183	\$60,000	\$65,000
12.	Salaries & Payroll Taxes	\$353,231	\$425,000	\$500,000
13.	All Other	\$6,941	\$8,000	\$10,000
Total Expenses		\$545,458	\$646,000	\$762,000
14.	Total Assets	\$143,482	\$174,000	\$223,000
15.	Liabilities	\$17,300	\$0	\$0
Net Assets		\$126,182	\$300,182	\$523,182

Service Delivery 2020 Numbers

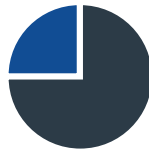
We provided services to hundreds of community members in 2020 across Philadelphia.

During the COVID-19 pandemic, we also provided digital recovery support to over 460,000 individuals across the US.



87% 

Of participants engaged in recovery support for either substance use or mental health.



83% 

Of participants engaged in more than one service or program type

Recovery planning, digital mutual aid meetings, and lifeskill workshops were the most popular service type in 2020.

\$355,000 

Total Estimated Savings
to the community

340

Naloxone kits provided
to individuals



460,000

Individuals served
through peer
services, mutual aid
meetings, recovery
yoga, and pro-social
activities.



Recovery Capital

+2.3

Average Increase

among Individuals
engaged in one-on-one
peer services

UNITY RECOVERY

RECOVERY COMMUNITY ORGANIZATION

2,500
digital recovery
meetings

Weekly meetings include
All Recovery, AA, NA, MARS,
Grieve Out Loud, Recovery
Dharma, Family Recovery,
SMART, Meditation, and Y12SR



6,000

peer-to-peer
engagement
sessions including
recovery planning,
brief check-ins, and
follow-ups.



143

average length
of engagement days
for participants
working 1-on-1 with
a peer recovery
support specialist.



139

warm hand-off
referrals provided
to participants for
housing, treatment,
employment,
education, etc.



We are proud to serve our community

”

Our community partnerships help us bring zero-cost recovery supports to Philadelphians across the city. Without them, we wouldn't enjoy the success we've had.

Adam Sledd

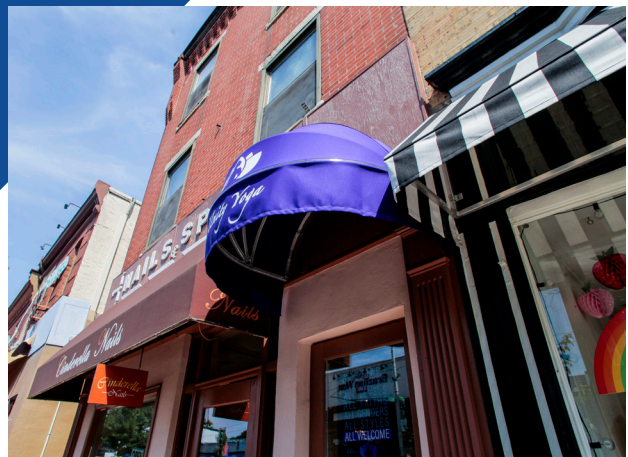
Recovery Support Services Director

NATIONAL OVERDOSE
AWARENESS DAY 2020

**SAVING LIVES IS
ALWAYS #1, YOU
CAN'T RECOVER IF
YOU'RE NO LONGER
LIVING**

**UNITY
RECOVERY**
RECOVERY COMMUNITY ORGANIZATION

If you are in
need of
Naloxone
please reach
out!



”

Unity really understands the community, what recovery can look like when it is supported, and how to involve all of us in the process at the ground level.

Kim Friel

Project Coordinator

The best way to predict recovery is to support it

Our Key Partners in 2020



”

I wish I had something like Unity available to me when I first began my recovery - from the individual services to the focus on whole person health, we really do offer something special.

Chris Golding
Project Director



Thank you for your continued support.



267-748-2454



contact@unityrecovery.org
www.unityrecovery.org



Unity Recovery

4363 Main Street Floor 3, Philadelphia PA , 19127

www.unityrecovery.org